

## **Appendix**

### **Appendix Exhibits**

Appendix Exhibit 1: Summary Statistics on Lawsuit Size 2001-2018

Appendix Exhibit 2: Average County Lawsuits Per 1,000 Residents 2001-2005 vs 2014-2018

Appendix Exhibit 3: Lawsuits by Race, 2001-2018

Appendix Exhibit 4: Additional Statistics on the Concentration of Lawsuits

Appendix Exhibit 5: Lawsuits by Wisconsin Hospitals, 2014-2018

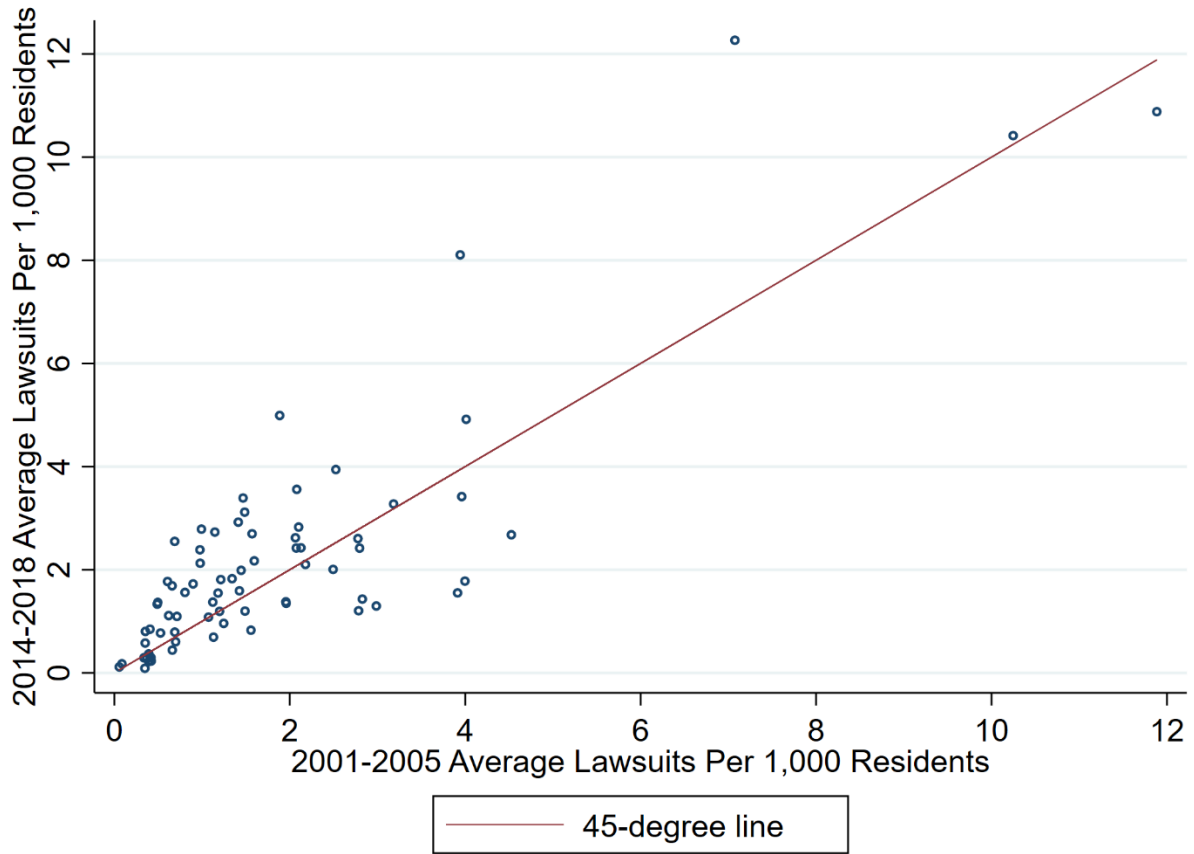
Appendix Exhibit 1: Summary Statistics on Lawsuit Size 2001-2018

Year	Mean	Standard Deviation	25 <sup>th</sup> Percentile	50 <sup>th</sup> Percentile	75 <sup>th</sup> Percentile	90 <sup>th</sup> Percentile	95 <sup>th</sup> Percentile	99 <sup>th</sup> Percentile
2001	\$3,939	\$8,670	\$803	\$1,498	\$3,657	\$8,998	\$14,535	\$41,444
2002	\$2,691	\$7,537	\$773	\$1,349	\$2,755	\$5,708	\$7,964	\$20,870
2003	\$2,881	\$6,327	\$833	\$1,457	\$2,876	\$5,840	\$8,346	\$23,772
2004	\$3,311	\$8,876	\$848	\$1,522	\$3,035	\$6,321	\$10,247	\$30,407
2005	\$3,609	\$14,925	\$843	\$1,556	\$3,129	\$6,168	\$10,053	\$34,973
2006	\$3,501	\$11,133	\$869	\$1,593	\$3,236	\$6,196	\$10,669	\$31,223
2007	\$3,766	\$10,320	\$886	\$1,626	\$3,393	\$6,420	\$11,754	\$35,492
2008	\$3,414	\$9,286	\$840	\$1,530	\$3,137	\$6,058	\$11,144	\$30,446
2009	\$3,503	\$7,649	\$894	\$1,726	\$3,503	\$6,405	\$11,317	\$33,380
2010	\$3,543	\$7,263	\$878	\$1,747	\$3,536	\$6,536	\$11,648	\$32,094
2011	\$3,662	\$9,300	\$874	\$1,739	\$3,680	\$7,154	\$11,330	\$31,599
2012	\$3,581	\$9,747	\$911	\$1,726	\$3,528	\$6,930	\$10,473	\$28,834
2013	\$3,481	\$8,452	\$924	\$1,766	\$3,559	\$6,852	\$10,019	\$30,404
2014	\$3,570	\$8,768	\$931	\$1,818	\$3,726	\$7,256	\$9,993	\$29,226
2015	\$3,627	\$10,601	\$923	\$1,783	\$3,544	\$6,806	\$10,270	\$29,578
2016	\$3,418	\$9,763	\$927	\$1,774	\$3,586	\$6,595	\$9,405	\$25,140
2017	\$3,049	\$9,437	\$849	\$1,618	\$3,245	\$5,900	\$8,424	\$18,574
2018	\$2,552	\$3,761	\$845	\$1,537	\$3,007	\$5,366	\$7,650	\$15,882
All	\$3,391	\$9,166	\$868	\$1,636	\$3,353	\$6,462	\$10,105	\$28,875

SOURCE: Authors' analysis of lawsuit data from the Wisconsin Circuit Court.

NOTE: All dollar amounts are reported in 2018 dollars.

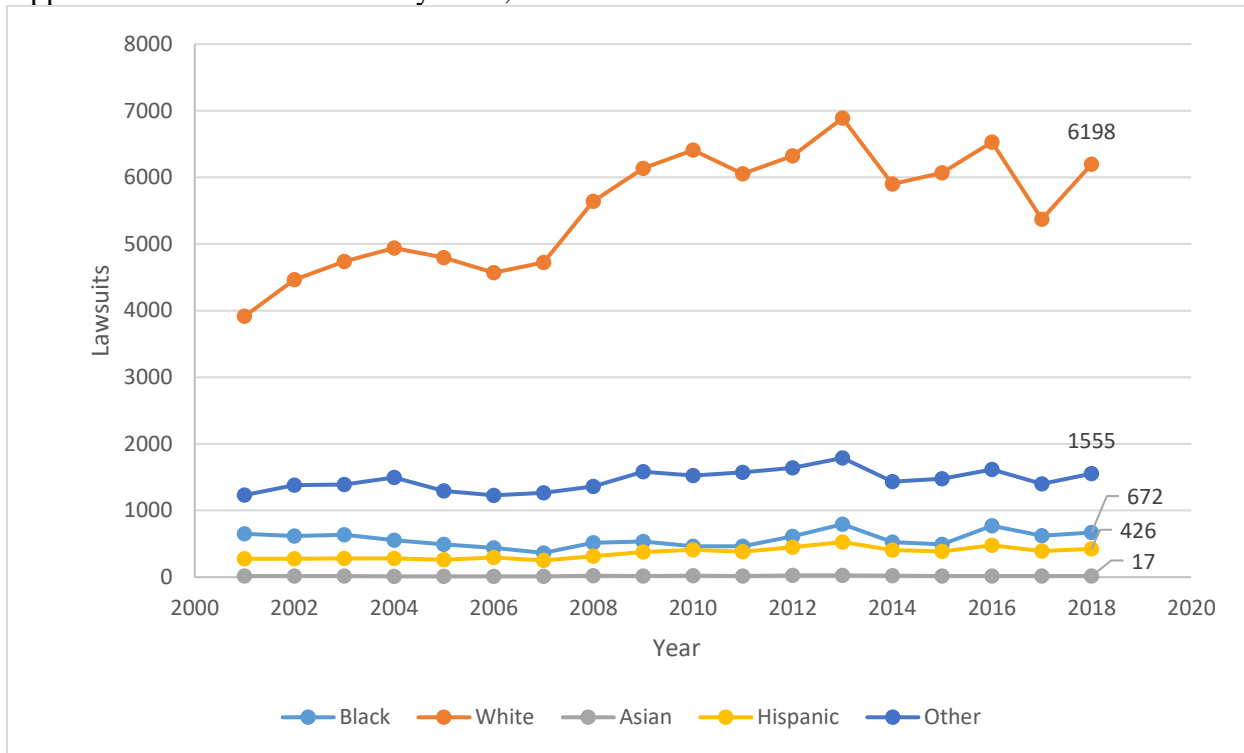
Appendix Exhibit 2: Average County Lawsuits Per 1,000 Residents 2001-2005 vs 2014-2018



SOURCE: Lawsuit data are from the Wisconsin Circuit Court. Data on county resident counts are from the Wisconsin Department of Health Services.

NOTE: The figure plots county level annual lawsuits per 1,000 residents from 2014 to 2018 against county level annual lawsuits per resident 2001 to 2005. Counties above the 45-degree line had a higher lawsuit rate in 2014-2018 than 2001-2005; 61% of counties had higher rates.

Appendix Exhibit 3: Lawsuits by Race, 2001-2018



SOURCE: Authors’ analysis of lawsuit data from the Wisconsin Circuit Court and state resident counts by race of residents from the Wisconsin Department of Health Services.

NOTE: The figure reports the total number of lawsuits by patient race for each year. Racial probability scores were calculated for each patient using Bayesian Improved Surname Geocoding based on the patient’s home address and surname. For cases with multiple defendants, we take the unweighted average of the probability scores for each race across all defendants. Those probability scores were then summed across all cases by race and year to estimate the total number of lawsuits. The Other category contains Biracial, Asian Pacific Islander, Native American, and Not Found.

Appendix Exhibit 4: Additional Statistics on the Concentration of Lawsuits

	Top 5% by Litigation	Top 10% by Litigation	Top 25% by Litigation
Inpatient Discharges (%)	14.3	22.8	49.4
Beds (%)	13.5	21.3	43.8
Revenue (%)	12.4	22.0	48.3
Litigation (%)	25.1	40.7	69.2

Source: Authors' analysis of lawsuit data from the Wisconsin Circuit Court and hospital admissions and revenue data from the Healthcare Cost Report Information System (HCRIS).

Note: Presents the share of total inpatient discharges, inpatient and outpatient discharges, beds, revenue, and litigation that the top 5%, top 10%, and top 25% most litigious hospitals represent.

Appendix Exhibit 5: Lawsuits by Wisconsin Hospitals, 2014-2018

Rank	Hospital Name	Total Lawsuits	Share of Admissions (%)	Share of Net Patient Revenue (%)
1	St. Agnes Hospital/Agnesian Health	2,632	7.783	0.352
2	Mile Bluff Medical Center	1,763	27.376	1.038
3	Waukesha Memorial Hospital	1,687	2.563	0.249
4	Aurora St. Luke's Medical Center	1,604	.929	0.074
5	Divine Savior Healthcare	1,572	16.190	0.780
6	Ascension Northeast Wisconsin St. Elizabeth Hospital	1,504	3.724	0.440
7	Gundersen Lutheran Medical Center	1,431	1.976	0.093
8	Reedsburg Medical Center	1,354	22.270	0.813
9	Aurora Medical Center of Oshkosh	1,209	7.443	0.451
10	St. Joseph's Hospital	920	4.848	0.311
11	Aspirus Wausau Hospital	885	2.087	0.114
12	Community Memorial Hospital	885	1.403	0.217
13	Marshfield Medical Center-Rice Lake	874	7.848	0.474
14	Aurora West Allis Medical Center	866	1.397	0.168
15	Aurora Medical Center Kenosha	823	3.072	0.192

16	United Hospital System St. Catherine's Medical Center	779	2.217	NA
17	Aurora Baycare Medical Center	764	1.699	.097
18	Fort Healthcare	714	7.295	0.364
19	Tomah Memorial Hospital	707	14.355	0.726
20	Froedtert and the Medical College of Wisconsin Froedtert Hospital	648	0.473	0.029
21	The Monroe Clinic	631	4.826	0.246
22	Aurora Sinai Medical Center	618	1.54	NA
23	Holy Family Memorial Hospital	617	4.825	0.354
24	Beloit Health System	595	2.893	0.229
25	Ascension St. Michaels	580	2.616	0.155
26	Aurora Medical Center – Bay Area	533	3.531	0.331
27	Westfields Hospital and Clinic	528	12.282	0.316
28	Watertown Regional Medical Center	526	5.685	0.315
29	University Hospital	492	0.310	0.021
30	Aurora Medical Center Grafton	475	1.287	0.125
31	Black River Memorial Hospital	451	9.772	0.655
32	Aurora Sheboygan Memorial Medical Center	450	1.648	0.162
33	Upland Hills Health	450	7.661	0.404

34	Gundersen Moundview Hospital and Clinics	434	46.717	1.194
35	Aspirus Langlade Hospital	432	7.068	0.252
36	Marshfield Medical Center	425	0.627	0.209
37	HSHS Sacred Heart Hospital	417	0.893	0.048
38	Aspirus Riverview Hospital and Clinics	394	2.932	0.143
39	Aspirus Medford Hospital & Clinics Inc	384	8.549	0.216
40	Memorial Medical Center of Ashland	352	3.488	0.301
41	Grant Regional Health Center	340	11.000	0.531
42	Ascension St. Clare's Hospital	309	1.100	0.132
43	Aurora Medical Center Summit	308	1.725	0.119
44	Aurora Lakeland Medical Center	296	2.125	0.220
45	Beaver Dam Community Hospitals	290	2.904	0.149
46	Aurora Medical Center Burlington	289	2.502	0.199
47	Oconomowoc Memorial Hospital	284	1.907	0.201
48	Aurora Medical Center in Washington County	284	3.608	0.256
49	Aurora Medical Center - Manitowoc County	282	2.586	0.237
50	Vernon Memorial Healthcare	281	4.517	0.268



51	Thedacare Medical Center- Berlin	275	3.728	0.313
52	Crossing Rivers Health Medical Center	270	5.658	0.442
53	Ascension Good Samaritan Hospital	256	10.143	0.452
54	St. Croix Regional Medical Center	250	3.286	0.193
55	Columbus Community Hospital Inc	236	5.364	0.252
56	HSHS St Vincent Hospital	235	0.459	0.025
57	HSHS St Mary's Hospital Medical Center	234	1.146	0.088
58	Hayward Area Memorial Hospital	225	5.051	0.253
59	Ascension Calumet Hospital	207	9.668	0.328
60	Ascension Our Lady of Victory Hospital	206	17.224	0.471
61	Ascension St Mary's Hospital	177	1.195	0.065
62	Thedacare Regional Medical Center-Neenah	169	0.440	0.670
63	SSM Health St Clare Hospital- Baraboo	167	1.620	0.222
64	Western Wisconsin Health	167	7.612	0.235
65	Waupun Memorial Hospital	163	3.626	0.156
66	Ascension All Saints	159	.235	0.024
67	HSHS St. Nicholas Hospital	157	1.275	0.078

68	HSHS St Clare Hospital	151	5.368	0.325
69	Gundersen Tri-County Hospital and Clinics	149	9.019	0.360
70	Amery Hospital and Clinic	147	2.774	0.171
71	Sauk Prairie Healthcare	143	1.548	0.106
72	Door County Medical Center	133	1.761	0.084
73	Flambeau Hospital	132	4.579	0.302
74	Marshfield Medical Center-Ladysmith	127	5.423	0.261
75	Burnett Medical Center	122	6.028	0.369
76	Edgerton Hospital and Health Services	116	6.349	0.385
77	Ripon Medical Center	114	4.333	0.138
78	Ascension Eagle River Hospital	111	5.533	0.277
79	Ascension Northeast Wisconsin Mercy Hospital	103	0.555	0.091
80	Unitypoint Health Meriter	102	0.132	0.018
81	HSHS St Joseph's Hospital	99	.638	0.016
82	Cumberland Healthcare	83	2.938	0.132
83	Spooner Health	80	3.660	0.267
84	Adventhealth Durand	79	5.766	0.205
85	Oakleaf Surgical Hospital	79	2.474	0.100
86	Memorial Hospital of Lafayette County	71	4.491	0.232
87	Ascension Sacred Heart Hospital	68	4.462	0.155

88	Gundersen Boscobel Area Hospital and Clinics	64	6.136	0.267
89	Bellin Hospital	55	0.130	0.007
90	Froedtert South - Kenosha Medical Center	54	0.133	0.017
91	Mayo Clinic Health System in Eau Claire	51	0.101	0.023
92	Hudson Hospital and Clinic	51	0.712	0.027
93	Mayo Clinic Health System - Franciscan Healthcare in La Crosse	41	0.132	0.014
94	Marshfield Medical Center - Neilsville	39	2.524	0.116
95	Gundersen St Joseph's Hospital and Clinics	30	2.371	0.061
96	Mayo Clinic Health System – Northland in Barron	28	0.615	0.024
97	Howard Young Medical Center	27	0.220	0.026
98	Ascension Southeast Wisconsin Hospital - St Francis Campus	26	.070	0.010
99	Thedacare Medical Center- Shawano	23	0.315	0.017
100	Essentia Health St Mary's Hospital of Superior	19	0.733	0.002
101	Thedacare Regional Medical Center-Appleton	19	0.047	0.005
102	Southwest Health	18	0.382	0.101

103	Mayo Clinic Health System - Red Cedar in Menomonie	18	0.287	0.013
104	Bellin Health Oconto Hospital	16	2.029	.026
105	Ascension Southeast Wisconsin Hospital - Franklin Campus	15	0.163	.009
106	SSM Health St Mary's hospital	14	.014	.015
107	Orthopaedic Hospital of Wisconsin	14	0.52	0.026
108	Thedacare Medical Center - Waupaca	14	0.289	0.014
109	Ascension Southeast Wisconsin Hospital - Elmbrook Campus	12	0.052	NA
110	Indianhead Medical Center	11	0.688	0.034
111	Thedacare Medical Center- New London	10	0.281	0.016
112	Richland Hospital	9	0.159	0.026
113	Mayo Clinic Health System - Franciscan Healthcare in Sparta	7	0.437	0.008
114	Mayo Clinic Health System - Chippewa Valley in Bloomer	7	0.313	0.008
115	SSM Health St Mary's Hospital Janesville	6	.044	0
116	MercyHealth Hospital and	6	0.0160	0.001

	Trauma Center - Janesville			
117	Mayo Clinic Health System - Oakridge in Osseo	5	0.281	0.010
118	Ascension Southeast Wisconsin Hospital - St Joseph's Campus	2	0.005	0.000
119	Ascension Columbia St. Mary's Hospital Milwaukee	1	0.002	0.001
120	River Falls Area Hospital	0	0	0
121	TheDACare Medical Center- Wild Rose	0	0	0
122	MercyHealth Hospital and Medical Center - Walworth	0	0	0
123	Osceola Medical Center	0	0	0
124	Ascension Columbia St Mary's Hospital Ozaukee	0	0	0
125	Stoughton Hospital Association	0	0	0

Source: Authors' analysis of lawsuit data from the Wisconsin Circuit Court and hospital admissions and revenue data from the Healthcare Cost Report Information System (HCRIS).